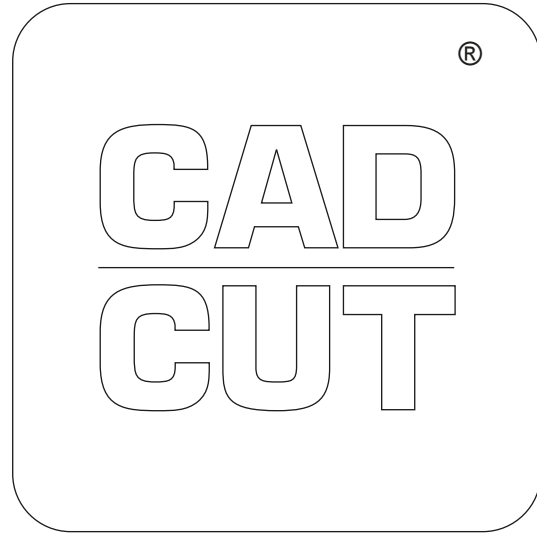




## SOFT METALLIC HEAT TRANSFER MATERIAL FEATURES A DISTINCT LUSTER AND SHINE

Creates a soft, metallised finish for textile decoration. It is supplied on a self-adhesive polyester carrier



## AVAILABLE IN

50 cm x 25 m rolls

## RECOMMENDED FABRICS

- 100% cotton
- 100% polyester
- Polyester-cotton blends

\* Test before application!

## CUTTING NOTES

You should always test cut prior to any production run. Remember cutter settings will need to be adjusted as the blade ages. For optimal cutting and weeding, maintain a line thickness of at least 1.5 mm (1/16") for lettering and logos.

## APPLICATION INSTRUCTIONS

- Temperature: 150° C
- Time: 10 sec.
- Pressure: medium
- (#4-6 bei Hotronix®)
- Peel: cold

## MULTI-COLOR DESIGNS

Apply background for 2-4 seconds, peel carrier warm/cold. Repeat for additional colors. Finish with final application of 13-15 seconds. Peel cold.

## ACCESSORIES RECOMMENDED

- Grip Cover Sheet
- Cover Sheet - Non-Sticky
- EZ Weeder®, LED Weeder. LED Pin or Tweezers

## CARE INSTRUCTIONS

Machine wash up to 40° C using mild detergent. Do not use bleach. Do not dry-clean. Do not iron directly onto CAD-CUT® Soft Metallic (use cover sheet).

## STORAGE

Store in cool, dry area. Avoid direct heat, sunlight and humidity.

## DETAILS



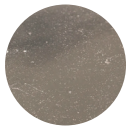
## KEY

Easy weed	Thin
Ironable	Sticky carrier
Ironable only inside out	Multi-color application
Washable	Peel hot
Sublimation	Application
Stretchable	
Flock	

# CAD-CUT® SOFT METALLIC



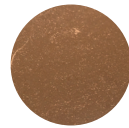
150°C  
10 sec



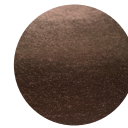
**5255**  
light pink



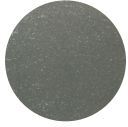
**5252**  
rose pink



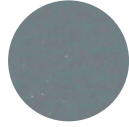
**5116**  
bronze



**5550**  
brown



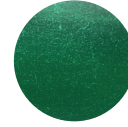
**5321**  
light goldish blue



**5320**  
light blue



**5350**  
navy



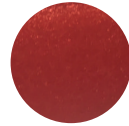
**5400**  
kelly green



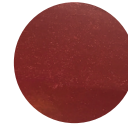
**5250**  
hot pink



**5280**  
purple



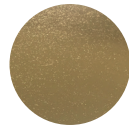
**5200**  
red



**5201**  
holo red



**5815**  
silver



**5115**  
gold