

PRESTIGE R1

DTF Printer

INTRODUCTION

Prestige R1 is the first original manufactured for DTF entry level users ,with the maximum printing width as 33cm(13") and printing speed as 1.2 m² / hour at 8 pass, it can easily allow you to manage to print 4-5 shirts/hour.

Industrial level of developing but keep for entry level's cost! Get ready for your DTF journey now by having Prestige R1 from DTF STATION.

FEATURES

1.2m²/hour at 8pass!

White Ink Management System(WIMS):

timed white ink stirring system to circulate and maintain white ink inside printer

Auto-cleaning System

Auto Ink Alarming System

Compact Size and Light Weight

Offered with DigiRIP RIP Software



BENEFITS

DTF Station Tech Support: here to help with full after-purchase support

Perfect for Entry level DTF Printing

Compact yet powerful

Intuitive, elegant design for easy set up



Scan for Info



Scan for Video



SPECIFICATIONS

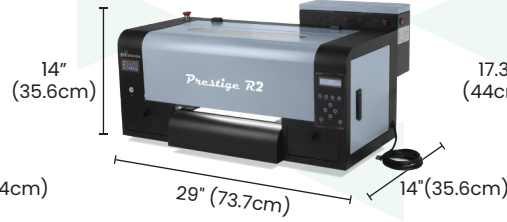
Printing Width	13" (33cm)
Printing Speed	700*1080 DPI 13.45 sq. ft./h (1.25m ² /h) 700*1440 DPI 9.69 sq. ft./h (0.9m ² /h)
Printer Head	Epson F1080 (1)
Software	DigiRIP RIP Software + Hoson
Machine Dimensions	32.28"W x 25.2"D x 12.6"H 82cm x 64cm x 32cm

Packaging Weight	88 lbs(40kg)
Machine Weight	82 lbs(37kg)
Packaging Dimensions	35.43"W x 23"D x 21.3"H 90cm x 58.5cm x 54.1cm
Daily Output	86 pcs(700*1080 DPI) / 64 pcs(720*1440 DPI)
Power Requirements	700W / 110V / 6.36A 700W / 220V / 3.18A

COMPARISON



Prestige R1



Prestige R2



Prestige R2 Pro

Print Head	EPSON F1080	Dual Epson XP600	Dual Epson i1600
Mainboard	Hoson	Hoson	Hoson
Max Print Width	13" (33 cm)	13" (33 cm)	13" (33 cm)
Printing Speed	700*1080 DPI 13.45 sq. ft./h (1.25m ² /h) 700*1440 DPI 9.69 sq. ft./h (0.9m ² /h)	6 PASS 700*1440 DPI 27 sq. ft./h	700*1200 DPI (10pass) 40.9 sq.ft/h (3.8m ² /h) 720*1800 DPI (12pass) 26.9 sq.ft/h (2.5m ² /h)
Daily Output	86 pcs(700*1080 DPI) / 64 pcs(720*1440 DPI)	160 pcs	260 pcs(700*1200 DPI) / 180 pcs(720*1800 DPI)

R1 BUNDLE



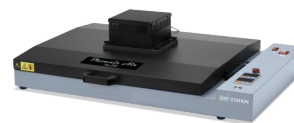
Prestige R1



Miro 13



Seismo S20



Phoenix Air 4050



Prisma Auto



Prisma Swing



Prisma Palette