



# CATALOGUE 2025

**DTF Station International Co.,Ltd.**



**YouTube**



**Website**



**Tik Tok**

- @DTF Station
- @dtfstation
- @dtfstation
- @DTF Station
- info@dtfstationglobal.com
- www.dtfstationglobal.com

# CONTENT

## DTF



Prestige R1



Prestige R2 Pro



Prestige L2



Prestige XL2 Pro



Prestige XL3



Prestige XL4

## UV-DTF



Aries 213



Aries 124

## Heat Press



Prisma  
Auto



Prisma  
Swing



Prisma  
Duet



Prisma  
Hobby



Prisma  
Palette

## Other



Arc 127



# BRAND STORY

# A3 SOLUTION

## Company Values

These are the values that guide our business, our product development, and our brand. As our company continues to evolve and grow, these values remain constant.

**Vision:** Our vision at DTF Station is to empower individuals worldwide to express their thoughts and emotions through their unique creations.

**Value:** Cultivating lasting connections, investing in people, and creating machines that endure our journey is a relentless pursuit of greatness fueled by the joy of what we do, and our ultimate purpose is to enrich lives and inspire innovation in our niche market.

**Mission:** Our mission at DTF Station is to be the undeniable choice for all, known in every home and print shop, where entrepreneurs start their journey with us, transforming the world of personalization and empowering printing as the ultimate tool for self-expression.

## Building a Legacy of Excellence in DTF Printing

In a world where profit often takes precedence over customer service, a group of passionate individuals embarked on a journey to change the narrative of the DTF printing industry. We witnessed importers rushing into the world of DTF printers, driven solely by the allure of financial gains, often overlooking the critical aspect of after-sales service. This reckless pursuit led to countless tales of despair, where businesses lost not only their money but also their faith in the very companies they had trusted.

As DTF technology emerged on the horizon just before the global pandemic of 2019, we recognized an opportunity to make a difference. Our journey began with rigorous research and relentless dedication. We took the bold step of importing equipment from the manufacturing hub of the world, China. However, we soon discovered that the path to reliability could have been clearer. Over ten machines, sourced from various Chinese manufacturers, failed to meet our stringent quality standards.

Determined not to settle for mediocrity, we persevered. In 2021, after months of painstaking effort and unwavering commitment to excellence, we unearthed a gem in the bustling city of Shenzhen. Here, we acquired sample equipment from a company that would later become the cornerstone of our vision—DTF Station.

We were driven by a purpose: to provide something extraordinary, to break free from the cycle of mistakes that plagued other DTF resellers. Our core belief was simple but powerful: while we may not possess the industry's absolute best equipment, we would offer the industry's best overall experience. DTF Station stood apart with an unwavering commitment to customer support, boasting an impressive collection of tech support resources that set us apart.

Our journey was marked by meticulous attention to detail. DTF Station prided itself on producing machines that not only boasted excellent external aesthetics but were also crafted with unmatched quality. Our equipment was designed to be not only efficient but compact, offering a unique solution in a market filled with bulky, outdated options. The relentless pursuit of perfection led us to continuously explore multiple factories, seeking innovative solutions to enhance quality and functionality.

In a world where shortcuts and compromises were commonplace, DTF Station carved a path of unwavering dedication to our customers. Our journey was not just about the products we sold, but the legacy we were building. It was a legacy of trust, reliability, and innovation in the DTF printing industry. DTF Station was more than just a brand; it was a promise—a promise to provide an experience that customers would remember, respect, and return to for years to come.

Today, DTF Station stands as a testament to what can be achieved when passion and purpose drive a brand. We are not just a company; we are a movement, a force committed to rewriting the story of DTF printing, one satisfied customer at a time.

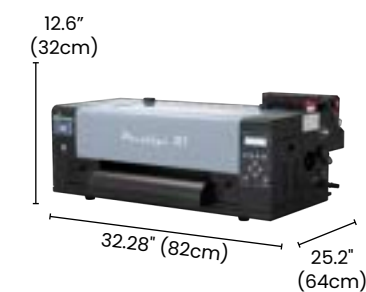
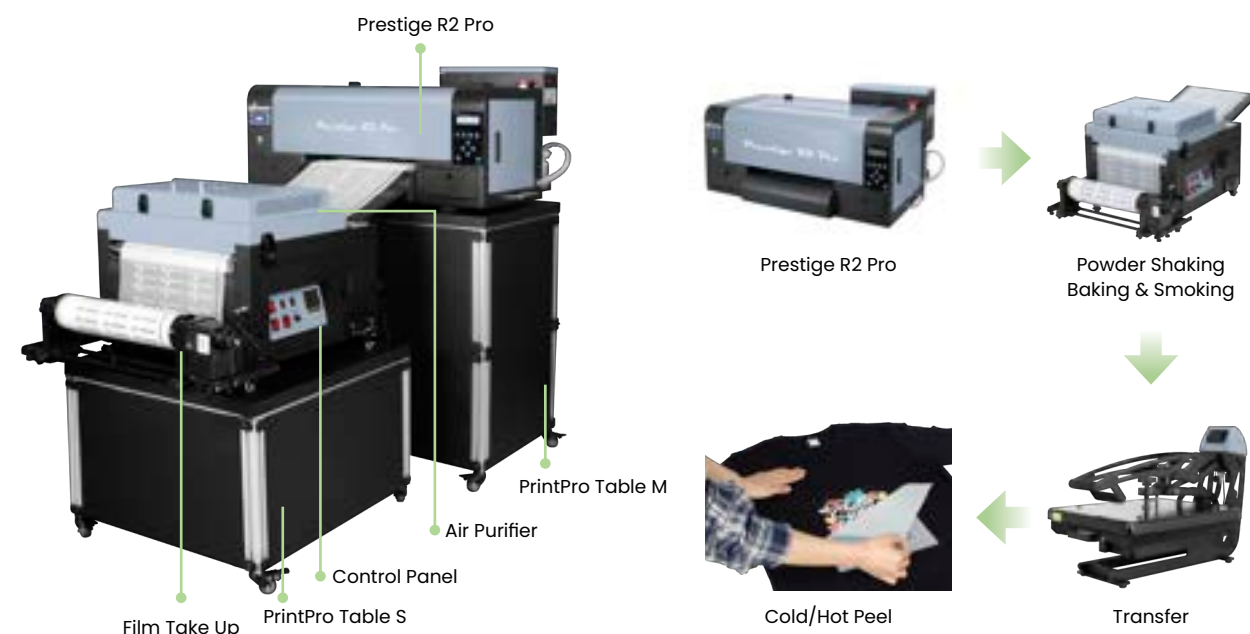
Solution for starters and crafters who want to try DTF  
For less than **64-86pcs** prints daily



## A3 SOLUTION

COMPARISON  
A3 DTF PRINTER

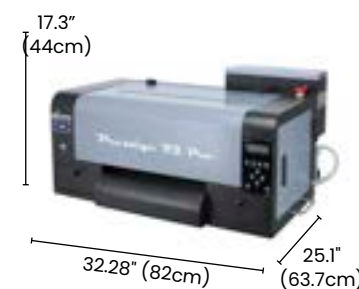
Entry level solution for developed business runners who need to print **180 to 260 pcs** of shirt per day



Prestige R1



Prestige R2



Prestige R2 Pro

Printer Head	Mainboard	Max Printing Width	Printing Speed	Daily Output
Epson F1080 (1)	DTF STATION PILOT	13" (33cm)	700*1080 DPI 13.45 sq. ft./h (1.25m <sup>2</sup> /h) 700*1440 DPI 9.69 sq. ft./h (0.9m <sup>2</sup> /h)	86 pcs (700*1080 DPI) / 64 pcs (720*1440 DPI)
Dual Epson F1080	DTF STATION PILOT	13" (33cm)	6 PASS 700*1440 DPI 27 sq. ft./h (2.51m <sup>2</sup> /h)	160 pcs
Dual Epson i1600	DTF STATION PILOT	13" (33cm)	700*1200 DPI (10pass) 40.9 sq.ft/h (3.8m <sup>2</sup> /h) 720*1800 DPI (12pass) 26.9 sq.ft/h (2.5m <sup>2</sup> /h)	260 pcs (700*1200 DPI) / 180 pcs (720*1800 DPI)



# PRESTIGE R1

## DTF PRINTER



**Prestige R1** is the first original manufactured for DTF entry level users, with the maximum printing width as 33cm(13") and printing speed as 1.2 m<sup>2</sup> / hour at 8 pass, it can easily allow you to manage to print 4-5 shirts/hour.

Industrial level of developing but keep for entry level's cost! Get ready for your DTF journey now by having Prestige R1 from DTF STATION.

### BENEFITS

- **DTF Station Tech Support:** here to help with full after-purchase support
- Perfect for Entry level DTF Printing
- Compact yet powerful
- Intuitive, elegant design for easy set up

### FEATURES

- **1.2m<sup>2</sup>/hour at 8pass!**
- **White Ink Management System(WIMS):** timed white ink stirring system to circulate and maintain white ink inside printer
- **Auto-cleaning System**
- **Auto Ink Alarming System**
- **Compact Size and Light Weight**
- **Offered with DigiRIP RIP Software**



Scan for Info



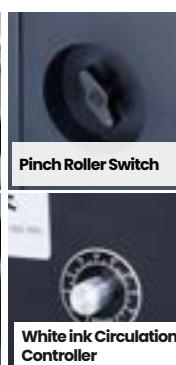
Scan for Video



Head Strike Sensor



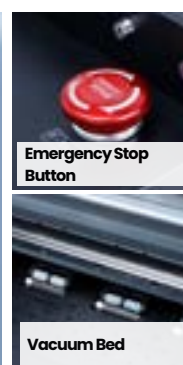
Maintenance Area



White Ink Circulation Controller



Temperature Controller



Vacuum Bed

# PRESTIGE R1

## DTF PRINTER

### SPECIFICATIONS

Item No.: D.02.01.0032(black&grey)/D.02.01.0033(pink)/D.02.01.0034(mint)

Max Printing Width	13" (33cm)	Mainboard	DTF STATION PILOT
Printing Speed	700*1080 DPI 13.45 sq. ft./h (1.25m <sup>2</sup> /h) 700*1440 DPI 9.69 sq. ft./h (0.9m <sup>2</sup> /h)	Machine Weight	82 lbs(37kg)
Printer Head	Epson F1080 (1)	Packaging Weight	88 lbs(40kg)
Software	DigiRIP RIP Software + DTF STATION PILOT	Daily Output	86 pcs(700*1080 DPI) / 64 pcs(720*1440 DPI)
Machine Dimensions	32.28"W x 25.2"D x 12.6"H 82cm x 64cm x 32cm	Power Requirements	700W
Packaging Dimensions	35.43"W x 23"D x 21.3"H 90cm x 58.5cm x 54.1cm	Suitable Users	Starter

### R1 BUNDLE



Prestige R1



Miro 13 Max



Seismo S20



Phoenix Air 4050



Prisma Auto



Prisma Swing



Prisma Palette

# PRESTIGE R2 PRO

## DTF PRINTER



Unleash your printing potential with the DTF Station **Prestige R2 Pro** DTF Printer – true production printing at a value and size you can't find anywhere else. This 13" powerhouse boasts dual Epson i1600 print heads for enhanced reliability and vibrant, crisp prints, alongside a suite of features for easy use and maintenance. Elevate your printing today.

### BENEFITS

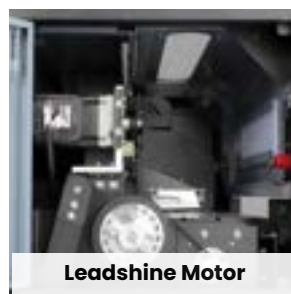
- **Desktop Size** with production power and quality
- Great for Intermediate Users, perfect balance of power and affordability
- Easy Access & Repair with Intuitive, labeled board design and connections



Visual Printing Platform



Easy Pinch Roller Lever



Leadshine Motor



Head-strike Sensor

### FEATURES

- **Speed:** 30–35 sq. ft. / hour, (720x1200)
- White Ink Management System (WIMS): timed white ink stirring system to circulate and maintain white ink inside printer, plus with the **Auto Ink Alert System**
- **Passive Auto-Cleaning:** when printer is left on, it will automatically maintain and clean printhead every 4 hours
- **Active Auto-Cleaning:** during set intervals (even during printing), printer can stop to clean printhead
- **Head Strike Sensor:** helps prevent damage to printhead, also coming with Automatic Film Sensor



Scan for Info



Scan for Video

# PRESTIGE R2 PRO

## DTF PRINTER

### SPECIFICATIONS

Item No.: D.02.01.0035-110V / D.02.01.0036-220V

<b>Max Printing Width</b>	14.57" (37 cm)	<b>Mainboard</b>	DTF STATION PILOT
<b>Printing Speed</b>	700*1080 DPI 13.45 sq. ft./h (1.25m <sup>2</sup> /h) 700*1440 DPI 9.69 sq. ft./h (0.9m <sup>2</sup> /h)	<b>Machine Weight</b>	125 lbs (56.7kg)
<b>Printer Head</b>	Dual Epson i1600	<b>Packaging Weight</b>	143 lbs (64.86kg)
<b>Software</b>	DigiRIP RIP Software	<b>Daily Output</b>	260 pcs(700*1200 DPI) / 180 pcs(720*1800 DPI)
<b>Machine Dimensions</b>	33.58"W x 25.31"D x 20.86"H 85.3cm x 64.3cm x 53cm	<b>Power Requirements</b>	700W
<b>Packaging Dimensions</b>	38.18"W x 26.38"D x 26.38"H 97cm x 67cm x 67cm	<b>Suitable Users</b>	Intermediate

### R2 PRO BUNDLE



Prestige R2 Pro



Miro 13 Max



Seismo S20



Phoenix Air 4050



Prisma Auto



Prisma Swing



Prisma Palette



# MIRO 13 MAX

## POWDER SHAKER



**Miro 13 Max** is DTF Station's perfect powdering and curing solution for any A3 and A4 sized DTF printing setup.

With bottom platen heating for even, consistently cured transfers and a built-in air purifier for safer, more eco-friendly powdering, this shaker helps make powdering your DTF transfers a breeze. Plus, at just 1170W (1.17KW), this shaker requires no special electrical adjustments to install or use.

### FEATURES

- **Patented air purification system built-in**
- **Bottom Platen Heating:** even, consistently cured transfers every time
- **Curved Heating Platen:** ensures media fits and flows through the shaker smoothly
- **Alignment markings:** markings on the shaker help you ensure your media is feeding correctly
- **True A3 Width Prints:** 13.78" (35cm)



Scan for Info



Scan for Video

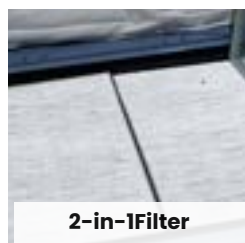
### SPECIFICATIONS

Item No.: D.01.02.0006-110V / D.01.02.0005-220V

<b>Max Film Width</b>	13.78" (35cm)	<b>Machine Dimensions</b>	23.6"W x 40"D x 18.5"H 60cm x 101.6cm x 47cm
<b>Powder Recycling</b>	Every 1 hour manually (keep printing)	<b>Packaging Dimensions</b>	23"W x 26.1"D x 20.7"H 66.29cm x 58.42cm x 52.58cm
<b>Machine Weight</b>	70.6 lbs(32.02kg)	<b>Power Requirements</b>	1.17KW
<b>Packaging Weight</b>	81.6 lbs(37.01kg)	<b>Suitable Users</b>	Beginner



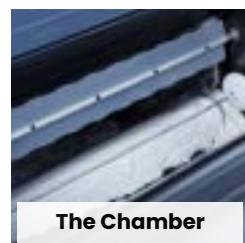
Built-in Purifier



2-in-1 Filter



Preheat



The Chamber



Control Panel

# DESKTOP SOLUTION

## POWDER STATION & OVEN



**Seismo S20**  
POWDER STATION

### SPECIFICATIONS

Item No.: D.01.02.0002(110V/220V)

<b>Machine Weight</b>	55.1 lbs(25kg)	<b>Machine Dimensions</b>	22.3"W x 17"D x 24"H 56.7cm x 43.3cm x 60.7cm
<b>Packaging Weight</b>	64 lbs(29kg)	<b>Packaging Dimensions</b>	26.4"W x 20.8"D x 28.3"H 67cm x 53cm x 72cm
<b>Powder Volume</b>	4kg	<b>Power Requirements</b>	15W

### FEATURES

- Easy to operate
- Easy to maintenance
- Friendly for beginners
- Desk-top version but efficient

### FEATURES

- Easy to operate
- Easy to maintenance
- Friendly for beginners
- Desk-top version but efficient
- Lower heating system
- Build-in Air Purifier



**Phoenix Air 4050**  
OVEN

### SPECIFICATIONS

Item No.: D.01.01.0013-110V/ D.01.01.0014-220V

<b>Machine Weight</b>	30.42 lbs(13.8kg)	<b>Machine Dimensions</b>	30.3"W x 21"D x 7.72"H 77cm x 53.4cm x 19.6cm
<b>Packaging Weight</b>	37.48 lbs(17kg)	<b>Packaging Dimensions</b>	32"W x 23.2"D x 10"H 81.5cm x 59cm x 25.5cm
<b>Max. Baking Size</b>	40*50cm	<b>Power Requirements</b>	1000W
<b>Temperature Range</b>	0-150°C (0-302°C)		

# PRINTPRO TABLES

# A2 SOLUTION



**The PrintPro Tables** are here to complete any DTF printing setup, and pair especially well with DTF Station's product line. This heavy-duty, fully metal stand provides sturdy support for your DTF printer or equipment.

With enclosed storage, industrial wheels for easy mobility, and an outside holder for the waste bottle, the PrintPro Tables will keep your workspace mobile and clean. Elevate your DTF printing setup with this versatile accessory, boosting your productivity and streamlining your operations for superior results.

## FEATURES

- **Heavy-Duty Construction:** Fully metal housing for durability and reliability.
- **Storage Space:** Store your ink cartridges, supplies, and other items keeping your workspace organized.
- **Industrial Wheels:** Smooth movement and easy positioning of the table for optimal setup.
- **Magnetic Doors:** Magnetic doors mean your stuff is easy to access when you need it and stays secure when you don't.



Scan for Info



Scan for Video

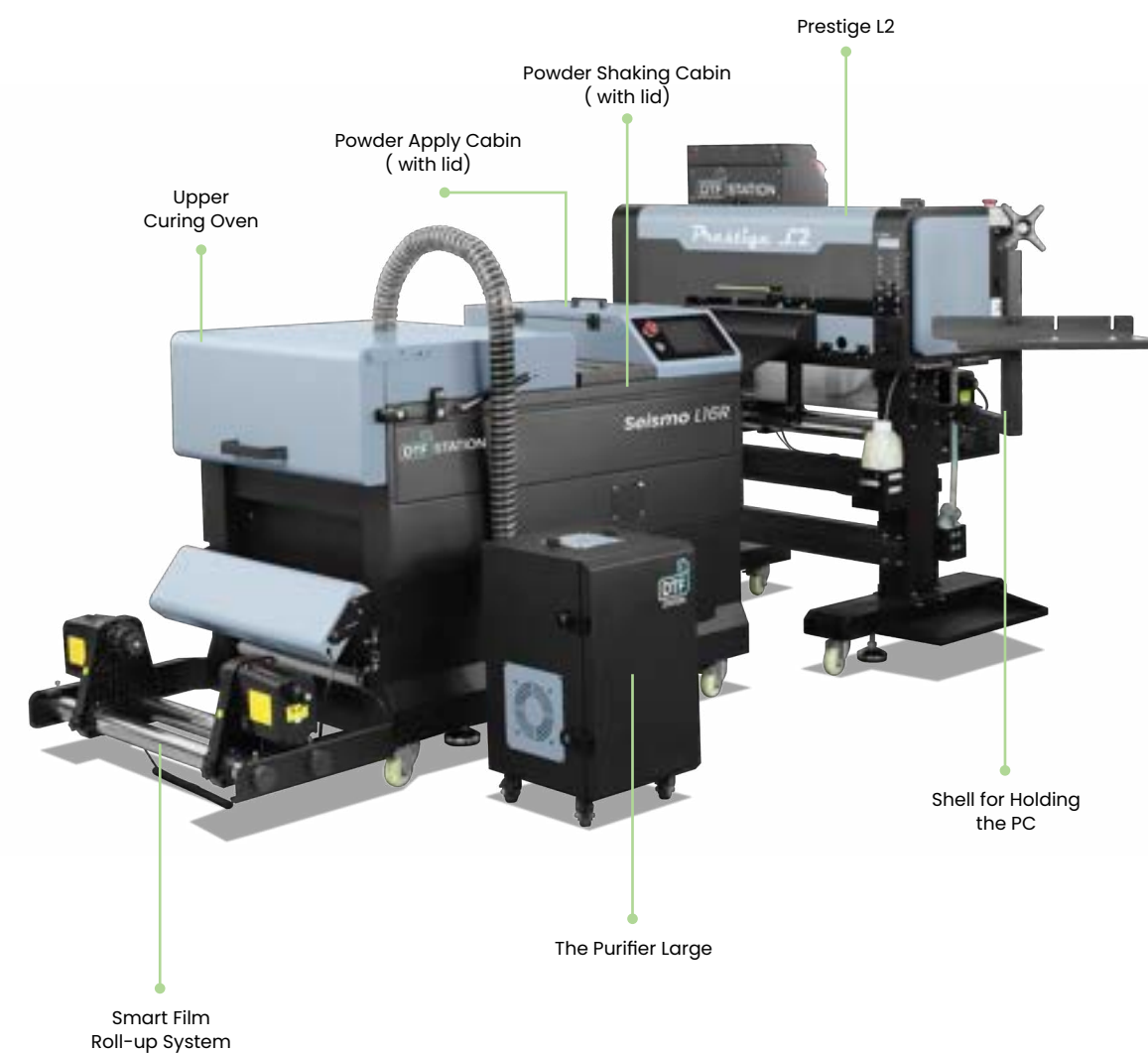
## SPECIFICATIONS

Item No.: D.01.04.0001-S / D.01.04.0002-M

<b>Material</b>	Metal	<b>Packaging Weight S</b>	61.7 lbs(28kg)
<b>Product Dimensions S</b>	27.6"W x 23.6"D x 18.5"H 70cm x 60cm x 47cm	<b>Packaging Weight M</b>	92.6 lbs(42kg)
<b>Product Dimensions M</b>	33"W x 20.7"D x 32.5"H 83.6cm x 52.6cm x 82.5cm		



Solution for industrial DTF users who need to print few hundreds of T-shirts daily with a smaller footprint





# PRESTIGE L2

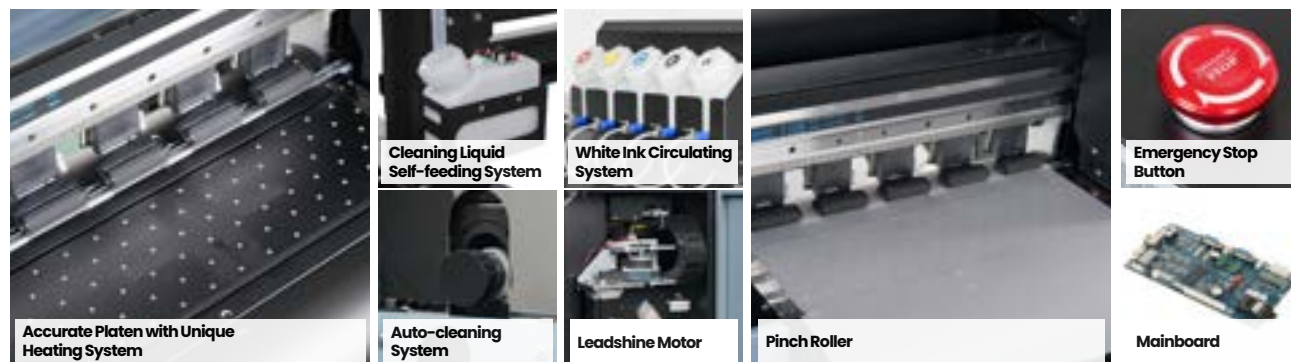
## DTF PRINTER



The **Prestige L2** is the perfect fit for mid-sized businesses and those looking to upgrade from smaller pipelines. With similar features as the Prestige XL2 in a smaller package, this 16" roll printer will boost your DTF printing speed with ease and efficiency.



Scan for Info



### FEATURES

- **Two i3200 print heads**
- **Head Strike Sensor:** Prevents any head strikes
- **Maximum Print width:** 16.5" roll media
- **Fully automated** system
- Variety of **adjustable settings** including:
  1. **Belt Speed**
  2. **Powder Shaking Power**
  3. **Cooling**
  4. **Suction**
  5. **Head Strike sensor** inside shaker and take-up reel
  6. **Pulls film as printer prints**

### BENEFITS

- **Speed & Efficiency:** 40-60 shirts/hour (12"x12", 720x1800, 6Pass/High Resolution)
- **2\*i3200 print heads:** One of the fastest performing DTF printers on the market
- **Compact size/smaller Footprint:** perfect for mid-sized businesses

# PRESTIGE L2

## DTF PRINTER

### SPECIFICATIONS

Item No.: D.02.01.0028-110V / D.02.01.0029-220V

<b>Max Printing Width</b>	45cm(18")	<b>Mainboard</b>	DTF STATION PILOT
<b>Printing Speed</b>	6Pass 5.5m <sup>2</sup> /h 8Pass 4.5m <sup>2</sup> /h	<b>Machine Weight</b>	306 lbs (139kg)
<b>Printer Head</b>	Dual Epson i3200	<b>Packaging Weight</b>	315 lbs (175kg)
<b>Software</b>	DigiRIP RIP Software	<b>Daily Output</b>	400 pcs(6PASS) / 300 pcs(8PASS)
<b>Machine Dimensions</b>	52.75"W x 26"D x 55"H 134cm x 66cm x 140cm	<b>Power Requirements</b>	800W
<b>Packaging Dimensions</b>	47.24"W x 39.3"D x 28"H 120cm x 100cm x 71.1cm	<b>Suitable Users</b>	Commercial business users

### L2 BUNDLE



Prestige L2



Seismo L16R

Miro 16

#### Powder Shaker

#### Heat Press Machine



Prisma Auto



Prisma Swing



Prisma Palette

# MIRO 16

## POWDER SHAKER



The **Miro 16** is DTF Station's ultimate powdering and curing solution, designed for seamless integration into any A2 (16") DTF printing setup. Featuring patented bottom platen heating for even, consistent transfers and a built-in air purification system for safer, eco-friendly powdering, this shaker streamlines the powdering process. With a low power draw of just 1300W (1.3KW), it requires no special electrical adjustments, making installation effortless.

### FEATURES

- **Patented bottom platen heating** for even, consistently cured transfers
- **Patented built-in air purifier** & internal smoke circulating system
- No need for expensive electrical modifications—just **plug in and start printing**
- Compact design to **fit in smaller spaces & standard doorways** for space efficiency
- **Ruler marks** on the shaker for easy alignment
- **Curved heating platen** ensures precise film fitting for optimal printing
- Easy-to-operate control panel
- Molded foam packaging for secure transportation



Scan for Info

### SPECIFICATIONS

Item No.: D.01.02.0021-110V/D.01.02.0022-220V

<b>Max Film Width</b>	45cm(18")	<b>Control Panel</b>	Touch screen
<b>Powder Recycling</b>	Every 4 to 5 hours manually	<b>Machine Weight</b>	374.8 lbs(170kg)
<b>Machine Dimensions</b>	60"W x 30"D x 40.6"H 152cm x 76cm x 103cm	<b>Packaging Weight</b>	265.55 lbs(120kg)
<b>Packaging Dimensions</b>	52"W x 48"D x 42.5"H 132cm x 122cm x 108cm	<b>Power Requirements</b>	1300W

# SEISMO L16R

## POWDER SHAKER



The **Seismo L16R** is an intuitive, automatic powdering option for DTF business runners. It has an auto-recirculating system that collects excess powder for refilling and reuse, making it more efficient and cost-effective. The shaker is controlled by an intelligent sensor system, and users simply need to make sure to recycle the ink and powder every 4 hours during operation.

### FEATURES

- **Sensor control system** makes using the shaker easy, intuitive, and consistent at lower labor costs
- **The suction system** makes setting up a new roll of film easy and helps you conserve film with each new roll of film

### BENEFITS

- **Free your worker** while get your worker better educated at a much more easier way



Scan for Info



Scan for Video

### SPECIFICATIONS

Item No.: D.02.02.0020

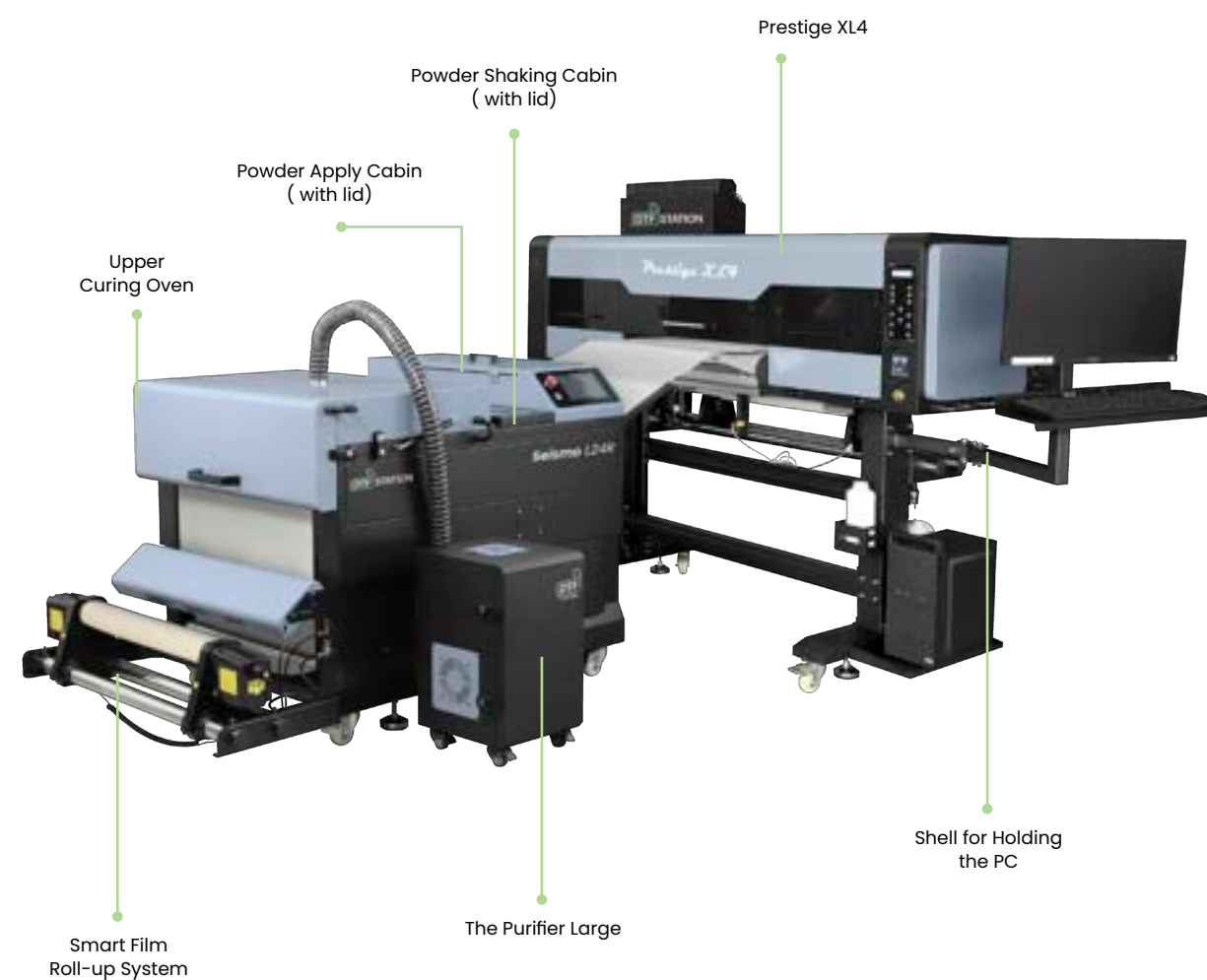
<b>Max Film Width</b>	45cm(18")	<b>Control Panel</b>	Touch screen
<b>Powder Recycling</b>	Every 4 to 5 hours manually	<b>Machine Weight</b>	374.8 lbs(170kg)
<b>Machine Dimensions</b>	63.8"W x 34.3"D x 39"H 162cm x 87.2cm x 99.2cm	<b>Packaging Weight</b>	485 lbs(220kg)
<b>Packaging Dimensions</b>	55.9"W x 44.5"D x 43.8"H 142cm x 113cm x 111.3cm	<b>Power Requirements</b>	2.5KW-3.5KW





# 60CM SOLUTION

Solution for industrial users – solutions with more print heads and faster speed available upon request



# COMPARISON

## 60CM DTF PRINTER

	Printer Head	Mainboard	Max Printing Width	Printable Color	Printing Speed	Daily Output
<p><b>Prestige XL2</b></p>	Epson i3200A1 x2	DTF STATION PILOT	23.62" (60 cm)	CMYKW	80-100 sq. ft./hour (7.4-9.3 m <sup>2</sup> /h)	500-650 pcs
<p><b>Prestige XL2 Pro</b></p>	Epson i3200HD + i3200A1	DTF STATION PILOT	23.62" (60 cm)	CMYKRGBO +WWWW	43-65 sq.ft./hour (4-6 m <sup>2</sup> /h)	300-400 pcs
<p><b>Prestige XL3</b></p>	Epson i3200A1 x3	DTF STATION PILOT	23.62" (60 cm)	CMYKW +RGBO	91-72 sq. ft./hour (8.5-6.7 m <sup>2</sup> /h)	440-540 pcs

# PRESTIGE XL2 PRO

## DTF PRINTER



**Prestige XL2 Pro** is the first 24" (60 cm) dual print-head printer with an 8-color system, including Orange, Red, Green and Blue, in the DTF station solution. It's ideal for users seeking high color accuracy in a large 24" (60 cm) format.

### FEATURES

- **More Color, Better Prints:** Addition of Red, Green, Blue, and Orange ink makes for more accurate, vibrant prints and wider possible color range
- **Save on space, not quality:** Slightly smaller than the Prestige XL3 with high-quality, vibrant color prints
- **Advanced Maintenance Features:** White Ink Management System (WIMS), Passive Auto-Cleaning, Auto-Cleaning, Auto-Wet Capping
- **Advanced Sensors:** Head Strike Sensor, Tension Bar Sensor, Build-in Temperature and Humidity sensor

### BENEFITS

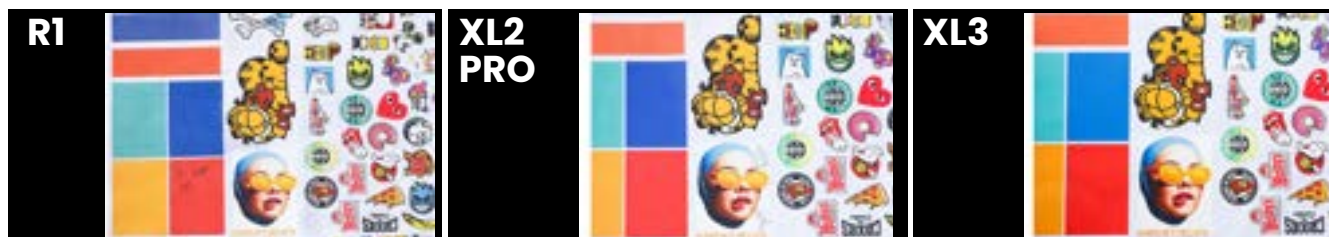
- **Easy access/repair:** intuitive, labeled board design and connections for easy access and repair



Scan for Info



Scan for Video



# PRESTIGE XL2 PRO

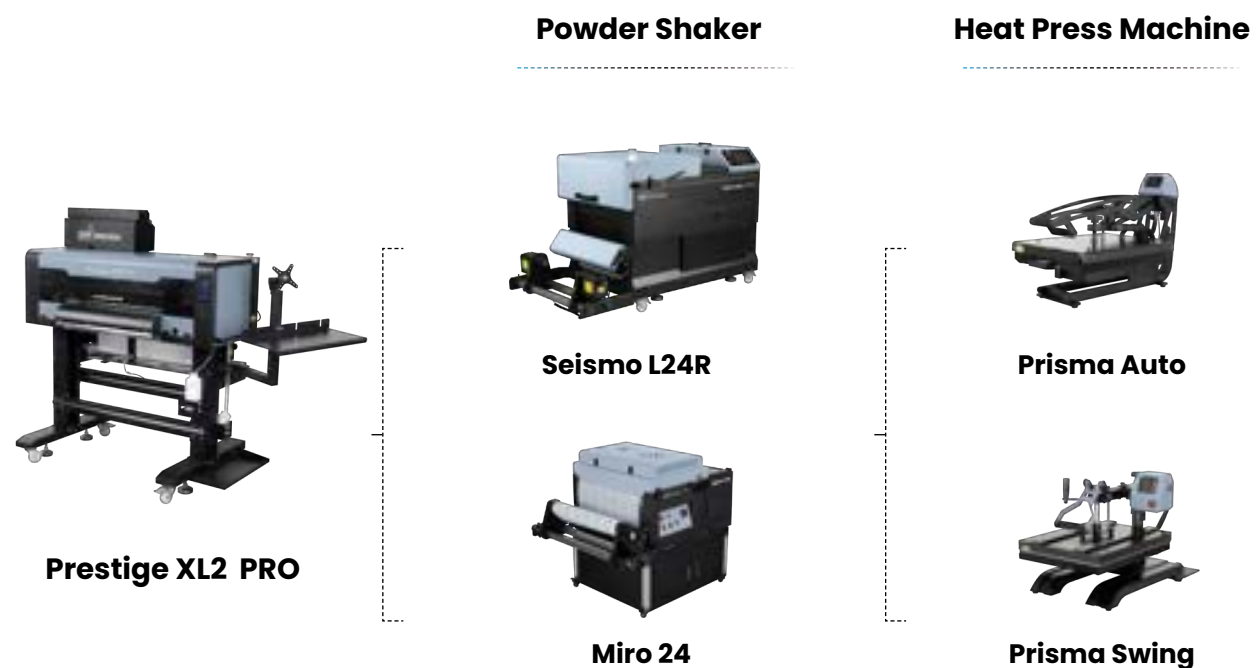
## DTF PRINTER

### SPECIFICATIONS

Item No.: D.02.01.0047-110V / D.02.01.0048-220V

Max Printing Width	23.62" (60cm)	Mainboard	DTF STATION PILOT
Printing Speed	720 x1200 dpi 41 sq.ft./h (4m <sup>2</sup> /h) 720 x1800 dpi 65 sq.ft./h (6m <sup>2</sup> /h)	Machine Weight	310 lbs (141kg)
Printer Head	Epson i3200HD+i3200A1	Packaging Weight	360 lbs (163kg)
Software	DigiRIP RIP Software + DTF Pilot	Daily Output	300-400 pcs
Machine Dimensions	64.7"W x 36.9"D x 55.7"H 164.4cm x 93.8cm x 141.6 cm	Power Requirements	1000W
Packaging Dimensions	57.4"W x 39.37"D x 28"H 146cm x 100cm x 71.1 cm	Suitable Users	Industrial business runner

### XL2 PRO BUNDLE





# PRESTIGE XL3

## DTF PRINTER



**Prestige XL3** adding Orange, Red and Green colors, XL3 is the only printer that has 8 colors printing system among DTF Station's DTF printer line. It is perfect fit for industrial businesses runners who is looking for high standard printing quality on more colors. Three Epson I3200 printheads, smaller size in comparison to other printers with similar performance.



Scan for Info



Scan for Video

### FEATURES

- 7.5 m<sup>2</sup>/h(720\*1800dpi); 9.5 m<sup>2</sup>/h(720\*1200dpi)
- White ink circulating system
- Head strike sensor
- Auto-cleaning system
- Auto-wet capping station system
- Auto Ink Alarming system
- Compact size with printing width as 60cm(24")
- Offered with DigiRIP RIP Software

### BENEFITS

- **DTF Station Tech Support:** here to help with full after-purchase support
- **Perfect for industrial business level of DTF Printing**
- **Compact yet powerful**
- **Intuitive, elegant design for easy set up**

# PRESTIGE XL3

## DTF PRINTER

### SPECIFICATIONS

Item No.: D.03.01.0495-110V / D.02.01.0042 -220V

Max Printing Width	23.62"(60cm)	Mainboard	DTF STATION PILOT
Printing Speed	720 x1800 dpi 90.42 sq.ft./h (8.4m <sup>2</sup> /h) 720 x2400 dpi 71.04 sq.ft./h (6.6m <sup>2</sup> /h)	Machine Weight	490.5 lbs (222.5kg)
Printer Head	Triple Epson i3200	Packaging Weight	608.4 lbs (276kg)
Software	DigiRIP RIP Software	Daily Output	440-540 pcs
Machine Dimensions	74.21"W x 29.5"D x 65.11"H 188.5cm x 75cm x 165.3 cm	Power Requirements	1000W
Packaging Dimensions	43.3"W x 82.6"D x 29.2"H 110cm x 210cm x 74.2 cm	Suitable Users	Industrial business runner

### XL3 BUNDLE



Prestige XL3

#### Powder Shaker



Seismo L24R

#### Heat Press Machine



Prisma Auto



Miro 24



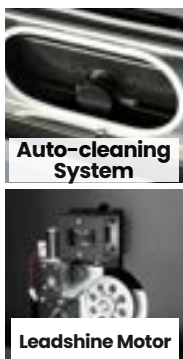
Prisma Swing



Accurate Platen with Unique Heating System



Electric Pinch Roll Lever



Auto-cleaning System



White Ink Circulating System



Mainboard

# PRESTIGE XL4

## DTF PRINTER



**Prestige XL4** is the fastest industrial-size printer for high-end custom printing. Boasting four Epson i3200 print heads and speeds of more than 133.5 sq ft/hr, this powerhouse can produce up to 1000 designs daily; and set your production apart from other print shops. The Prestige XL4's remarkable speed and efficiency not only enhance productivity but also ensure high-quality output for even the most demanding custom printing tasks.



Scan for Info



Scan for Video

### FEATURES

- **WhiteinkManagement system(WIMs):** timed white ink stirring system to circulate and maintain white ink inside printer
- **Head Strike Sensor:** helps prevent damage to printhead
- **Media Tension Sensor**
- **Auto Wet capping system**
- **Industrial Carriage Motor Drive:** Higher speeds, allowing for faster printing rates
- **Film Sensor**

### BENEFITS

- **DTF station Tech support:** here to help with full after-purchase support 1 year Limited Warranty on Non-Consumable Parts + 6 Month Warranty on up to 2 printheads\*

\*Must complete Onsite Training/installation

# PRESTIGE XL4

## DTF PRINTER

### SPECIFICATIONS

Item No.: D.02.01.0039-110V / D.02.01.0038-220V

<b>Max Printing Width</b>	23.62"(60cm)	<b>Mainboard</b>	DTF STATION PILOT
<b>Printing Speed</b>	720 x1800 dpi 172 sq.ft./h (17m <sup>2</sup> /h) 720 x2400 dpi 106.5 sq.ft./h (9.9m <sup>2</sup> /h)	<b>Machine Weight</b>	490.5 lbs (222.5kg)
<b>Printer Head</b>	Epson i3200x4	<b>Packaging Weight</b>	608.4 lbs (276kg)
<b>Software</b>	DigiRIP RIP Software	<b>Daily Output</b>	440-540 pcs
<b>Machine Dimensions</b>	74.21"W x 29.5"D x 65.11"H 188.5cm x 75cm x 165.3 cm	<b>Power Requirements</b>	1000W
<b>Packaging Dimensions</b>	43.3"W x 82.6"D x 29.2"H 110cm x 210cm x 74.2 cm	<b>Suitable Users</b>	Industrial business runner

### XL4 BUNDLE



Prestige XL4



Seismo L24R



Miro 24



Prisma Auto



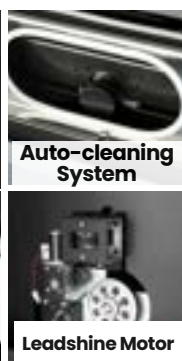
Prisma Swing



Accurate Platen with Unique Heating System



Electric Pinch Roll Lever



Auto-cleaning System



Leadshine Motor



White Ink Circulating System



Emergency Stop Button

Mainboard



# COMPARISON

## XL2 & XL4 DTF PRINTER

	Printer Head	Mainboard	Max Printing Width	Printable Color	Printing Speed	Daily Output
 <p><b>Prestige XL2</b></p>	Epson i3200A1 x2	DTF STATION PILOT	23.62" (60 cm)	CMYKW	720 x1200 dpi 41 sq.ft./h (4m <sup>2</sup> /h) 720 x1800 dpi 65 sq.ft./h (6m <sup>2</sup> /h)	500-650 pcs
 <p><b>Prestige XL4</b></p>	Epson i3200A1 x4	DTF STATION PILOT	23.62" (60 cm)	CMYKW	720 x1800 dpi 172 sq.ft./h (17m <sup>2</sup> /h) 720 x2400 dpi 106.5 sq.ft./h (9.9m <sup>2</sup> /h)	680 pcs

# COMPARISON

## SEISMO L24R & MIRO 24 POWDER SHAKER

	Max Film Width	Max. amount of powder applied at one time	Powder Filling Box	Powder Collection Drawer	Powder Filling Frequency
 <p><b>Miro 24</b></p>	23.62" (60 cm)	2.2 lbs (1kg)	No	Yes	Every 1 Hour
 <p><b>Seismo L24R</b></p>	23.62" (60 cm)	4.4 lbs (2kg)	Yes	Yes	Every 2-3 Hours

# MIRO 24

## POWDER SHAKER



**The Miro 24** is our latest automatic DTF powder shaker and dryer, designed for DTF users who require a powerful solution for printing widths above 18" (45cm). An enhanced version of our Seismo M24 shaker, the Miro 24 is specifically engineered to pair seamlessly with DTF Station's 18" (45cm) and all 24" (60cm) DTF systems. With upgraded heating structure, power consumption has been optimized from 3000W on the Seismo M24 to 1700W on the Miro 24, offering a more efficient powder application process. Additionally, the Miro 24 features a built-in air purifier, ensuring a safer and more eco-friendly workspace that also saves time and space.

### FEATURES

- **Compact size** makes it easy to go through a standard width door without any special tools
- **Low power consumption** no need for special electrician assistance during setup
- **Air Purifier built-in** eliminates smoke and help ensure a safe workspace
- **Scale mark on the shaker for easy alignment**
- **Curved heating platen** ensures the film fits precisely for more optimal printing
- **Simple, intuitive build** easy to use, maintain, and clean
- **Work Table Included**



Scan for Info



Scan for Video

### SPECIFICATIONS

Item No.: D.01.02.0009-110V / D.01.02.0008-220V

<b>Max Film Width</b>	60cm(23.62")	<b>Machine Weight</b>	254 lbs(115kg)
<b>Powder Recycling</b>	Every 1 hour manually	<b>Packaging Weight</b>	332 lbs(150kg)
<b>Machine Dimensions</b>	59.55"W x 30.16"D x 22.38"H 151.2cm x 76.6cm x 56.9cm	<b>Power Requirements</b>	1.7KW
<b>Packaging Dimensions</b>	37.01"W x 41.34"D x 39.37"H 94cm x 105cm x 100cm	<b>Suitable Users</b>	Advanced DTF users /Printing factories



# SEISMO L24R

## POWDER SHAKER



### FEATURES

- **Sensor control system** to make the shaker working stable at a much more lower labor cost
- **Suction system** to save your film for each new roll of film set up while make the new roll feeding process much more easier

### BENEFITS

- **Free your worker** while get your worker better educated at a much more easier way



Scan for Info



Scan for Video

### SPECIFICATIONS

Item No.: D.02.02.0017

<b>Max Film Width</b>	60cm(23.62")	<b>Control Panel</b>	Touch screen
<b>Powder Recycling</b>	Every 4 to 5 hours manually	<b>Machine Weight</b>	418.8 lbs(190kg)
<b>Machine Dimensions</b>	63.8"W x 35.9"D x 39"H 162cm x 91.2cm x 99.2cm	<b>Packaging Weight</b>	529.1 lbs(240kg)
<b>Packaging Dimensions</b>	55.9"W x 44.5"D x 43.8"H 142cm x 113cm x 111.3cm	<b>Power Requirements</b>	3KW-5.2KW





# THE PURIFIER MINI



## FEATURES

- Compact in size
- Easy to replace the parts
- Compatible from both 110V to 220V

## BENEFITS

- Get your working environment friendly at a low noise

**The Purifier Mini** purifies the air from particles created during the DTF process, promoting a clean and safe working environment for small to mid-size DTF printing setups.

Small size, easy to replace parts and accessories, and wide compatibility with many DTF printers, ovens, and shakers were the most important qualities in mind during the Mini's development.

## SPECIFICATIONS

Item No.: D.01.03.0006 (110V/220V)

<b>Voltage</b>	1.5A	<b>Machine Weight</b>	12.1 lbs(5.5kg)
<b>Machine Dimensions</b>	8.11"W x 8.11"D x 10.63"H 20.6cm x 20.6cm x 27cm	<b>Packaging Weight</b>	29.8 lbs(13.5kg)/2sets
<b>Packaging Dimensions</b>	13.8"W x 13.8"D x 15"H 35cm x 35cm x38cm 28.7"W x 14.6"D x 15"H(2sets) 73cm x 37cm x38cm(2sets)	<b>Power Requirements</b>	50W



# THE PURIFIER LARGE



## FEATURES

- Compact in size
- Easy to replace the parts
- Oil and smoke separate system

## BENEFITS

- Get your working environment friendly at a low noise

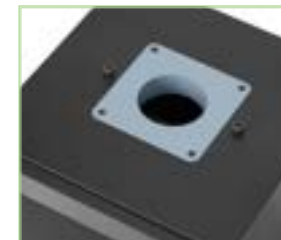
**The Purifier Large** is a must-have for DTF printing users who are running large-format DTF printers, like the Prestige L2, XL2, and XL4. It purifies the air from particles created during the DTF process, promoting a clean and safe working environment for small to mid-size DTF printing setups.

Smaller in size than other comparable purifiers, this commercial unit has easy to replace parts and accessories and was designed to be compatible with a wide range of DTF printers, ovens, and shakers.

## SPECIFICATIONS

Item No.: D.01.03.0005-110V / D.01.03.0003-220V

<b>Voltage</b>	1.5A	<b>Machine Weight</b>	61.7 lbs(28kg)
<b>Machine Dimensions</b>	11.8"W x 15.8"D x 21.3"H 30cm x 40cm x 54.1cm	<b>Packaging Weight</b>	66.1 lbs(30kg)
<b>Packaging Dimensions</b>	20.5"W x 13.8"D x 15"H 52cm x 35cm x38cm	<b>Power Requirements</b>	62W



## DTF CONSUMABLES

## DTF CONSUMABLES

	ROLL	Sheet
 <p><b>COLOR PRIME DTF Film (Hot/Cold Peel)</b></p>	Item No.: D.03.01.0256-20cm Item No.: D.03.01.0020-30cm Item No.: D.03.01.0505-35cm Item No.: D.03.01.0025-40cm Item No.: D.03.01.0023-45cm Item No.: D.03.01.0021-60cm Item No.: D.03.01.0001-81cm Size: 100 m/roll	Item No.: D.03.01.0005-A4 Item No.: D.03.01.0004-A3 Item No.: D.03.01.0218-33*48cm Item No.: D.03.01.0219-35*40cm Item No.: D.03.01.0220-40*50cm Pcs: 100 sheet/bag
 <p><b>COLOR PRIME DTF Film (Instant Peel)</b></p>	Item No.: D.03.01.0731-20cm Item No.: D.03.01.0704-30cm Item No.: D.03.01.0693-33cm Item No.: D.03.01.0692-35cm Item No.: D.03.01.0740-40cm Item No.: D.03.01.0734-43cm Item No.: D.03.01.0694-45cm Item No.: D.03.01.0735-76cm Item No.: D.03.01.0748-80cm Item No.: D.03.01.0733-90cm Size: 100 m/roll	Item No.: D.03.01.0744-A3 Item No.: D.03.01.0745-33*48cm Item No.: D.03.01.0742-35*40cm Item No.: D.03.01.0743-40*50cm Pcs: 100 sheet/bag
 <p><b>DTF Golden Film (Cold Peel)</b></p>	Item No.: D.03.01.0276-20cm Item No.: D.03.01.0277-30cm Item No.: D.03.01.0407-60cm Size: 25 m/roll	Item No.: D.03.01.0271-A4 Item No.: D.03.01.0275-A3 Item No.: D.03.01.0278-33*50cm Item No.: D.03.01.0279-40*50cm Pcs: 100 sheet/bag
 <p><b>DTF Film Glow in the Dark (Cold Peel)</b></p>	Item No.: D.03.01.0280-20cm Item No.: D.03.01.0281-30cm Size: 25 m/roll	Item No.: D.03.01.0270-A4 Item No.: D.03.01.0274-A3 Item No.: D.03.01.0286-33*50cm Item No.: D.03.01.0287-40*50cm Pcs: 100 sheet/bag
 <p><b>DTF Film Glitter (Cold Peel)</b></p>	Item No.: D.03.01.0284-20cm Item No.: D.03.01.0285-30cm Size: 25m/roll	Item No.: D.03.01.0269-A4 Item No.: D.03.01.0273-A3 Item No.: D.03.01.0282-33*50cm Item No.: D.03.01.0283-40*50cm Pcs: 100 sheet/bag  Item No.: D.03.01.0272-A4 Pcs: 30 sheet/bag



**COLOR PRIME DTF INK  
(CMYKW)**

White: F.02.06.0049  
 Black: F.02.06.0050  
 Cyan: F.02.06.0051  
 Magenta: F.02.06.0052  
 Yellow: F.02.06.0053  
 Size: 500ml/bottle

White: F.02.06.0044  
 Black: F.02.06.0045  
 Cyan: F.02.06.0046  
 Magenta: F.02.06.0047  
 Yellow: F.02.06.0048  
 Size: 1000ml/bottle



**COLOR PRIME DTF INK  
(RGO)**

Red: F.02.06.0066  
 Green: F.02.06.0067  
 Blue: F.02.06.0068  
 Orange: F.02.06.0069  
 Size: 1000ml/bottle



**COLOR PRIME  
Cleaning Liquid &  
Maintenance Liquid**

Red: F.02.06.0066  
 Green: F.02.06.0067  
 Blue: F.02.06.0068  
 Orange: F.02.06.0069  
 Size: 1000ml/bottle



**COLOR PRIME DTF Powder**

Item No.: F.02.06.0014  
 Size: 1kg/bag

Item No.: D.03.01.0221  
 Size: 20kg/bag



**COLOR PRIME Flex  
DTF Powder**

Item No.: D.03.01.0719  
 Size: 1kg/bag

Item No.: D.03.01.0720  
 Size: 25kg/bag



**COLOR PRIME DTF  
Black Powder**

Item No.: D.03.01.0545  
 Size: 1kg/bag



# ARIES 213

## UV-DTF PRINTER



**The Aries 213**, the 2nd beginner UV DTF printer from DTF Station, combines a compact design with advanced features for superior performance on hard surface applications. It features a single industrial Epson i3200HD-U1 printhead for simpler maintenance, intuitive operation, and exceptional print quality, along with an LCD touch panel and an ink level indicator for a seamless user experience. Ideal for business starters or anyone expanding into UV DTF printing technology with limited space, the Aries 213 seamlessly combines innovation, reliability, and ease of use in one powerful, compact package.

### SPECIFICATIONS

Item No.: D.02.03.0015-110V / D.02.03.0016-220V

<b>Printer Head</b>	EPSON 3200HD U1	<b>Max Print Width</b>	30cm(11.8")
<b>Mainboard</b>	DTF STATION PILOT	<b>Machine Weight</b>	253.53 lbs(115kg)
<b>Machine Dimensions</b>	39"W x 24"D x 45.2"H 100cm x 60cm x 115cm	<b>Packaging Weight</b>	330.69 lbs(150kg)
<b>Product Dimensions</b>	43"W x 41"D x 28.3"H 110cm x 72cm x 105cm	<b>Power Requirements</b>	700W
<b>Printing Speed</b>	(High Speed Mode) 2.5-3.5m <sup>2</sup> /H (26.9-37.7ft <sup>2</sup> /H) (High Res Mode) 2.0-2.5m <sup>2</sup> /H(21.5-26.9ft <sup>2</sup> /H)		

### FEATURES

- Compact size with a printing width of 30cm (11.8")
- LCD touch control panel with easy controls for a user-friendly experience
- Printing and laminating, 2-in-1 functionality
- White ink circulating system
- Head strike sensor
- Auto-cleaning system
- Auto ink alarming system
- Includes DigiRIP RIP software

# ARIES 124

## UV-DTF PRINTER



**The Aries 124** is the fastest in speed, largest in width of UV-DTF Printer among our DTF STATION Family, we had been waiting for so long to launch it. There is no doubt that UV-DTF would be the next game changer for promotion, sign, personalized industry. The Aries 124 is with four Epson I1600 heads, it is the perfect industrial level solution for customer who would like to lower the cost for their promotional business, have more possibility for their personalized business and more easier but better performance for their sign business

### FEATURES

- 1024pcs 4\*4cm logo printing/h (720\*1800dpi)
- 1590pcs 4\*4cm logo printing/h (720\*1200dpi)
- White ink circulating system
- Head strike sensor
- Auto-cleaning system
- Auto Ink Alarming system
- Compact size with printing width as 60cm(23.6")
- Pneumatic release film feeding system
- Air purifier to lessen the smell
- LCD touch screen with ink level indicator
- Static removing structure



Scan for Info



Scan for Video

### SPECIFICATIONS

Item No.: D.02.03.0013-110V / D.02.03.0014-220V

<b>Printer Head</b>	Epson i1600x4	<b>Max Print Width</b>	60cm(23.6")
<b>Mainboard</b>	DTF STATION PILOT	<b>Machine Weight</b>	551.16 lbs(250kg)
<b>Machine Dimensions</b>	73.8"W x 37.4"D x 62.8"H 187.5cm x 95cm x 159.4cm	<b>Packaging Weight</b>	716.5 lbs(325kg)
<b>Product Dimensions</b>	47.2"W x 44.9"D x 33.3"H 120cm x 114cm x 84.6cm	<b>Power Requirements</b>	1900W
<b>Printing Speed</b>	1024pcs 4*4" logo printing(720*1800) 1590pcs 4*4" logo printing(720*1200)		



# UV-DTF CONSUMABLES

# UV-DTF CONSUMABLES



UV-DTF Film A-PET

Item No.: D.03.01.0012-31cm  
Item No.: D.03.01.0490-62cm  
Size: 100m/roll



UV DTF Film B

Item No.: D.03.01.0008-31cm  
Item No.: D.03.01.0011-62cm  
Size: 100m/roll



UV DTF Golden Film

Item No.: D.03.01.0009-31cm  
Size: 100m/roll



UV DTF Silver Film

Item No.: D.03.01.0012-31cm  
Size: 100m/roll



DigiRIP

Item No.: D.03.01.0051

DIGIRIP



COLOR PRIME  
UV DTF Ink-1000ml

Black: F.02.06.0033  
Light Black: F.02.06.0059  
Light Light Black: F.02.06.0060

Cyan: F.02.06.0034  
Light Cyan:F.02.06.0040

Magnetic: F.02.06.0035  
Light Magnetic: F.02.06.0039

Yellow: F.02.06.0041  
White: F.02.06.0042  
Size: 1000ml/bottle



COLOR PRIME  
UV DTF Ink-500ml

Black: F.02.06.0022  
Cyan: F.02.06.0023  
Magnetic: F.02.06.0024  
Yellow: F.02.06.0025  
White: F.02.06.0026  
Size: 500ml/bottle



Varnish Liquid

Item No.: F.02.06.0038  
Size: 1000ml/bottle



Cleaning Liquid

Item No.: D.03.01.0363  
Size: 1000ml/bottle



Maintenance Liquid

Item No.: D.03.01.0145  
Size: 1000ml/bottle



# PRISMA AUTO

## HEAT PRESS



**The Prisma Auto Heat Press** is an intuitive and powerful press perfect for most garment printing workflows. It features a 16"x20" platen size, the most popular size for most printers, an auto-open mechanism, slide-out lower platen, and RAMLOCK interchangeable platens.

Given these features and more, the Prisma Auto is the press you need for all your printing jobs!

### FEATURES

- **RAMSPIN System:** With the self-developed "RAMSPIN" quick-change system, users can switch between auto-open and manual open control options quickly and easily.
- **RAMLOCK Quick Change System:** With this patented system, users can change between multiple lower platen options and sizes quickly and easily.
- **Pressure sensor:** Current pressure is easily viewable on the press's display.
- **Dressable Lower Platen:** The special laser cut base allows users to dress garments over the lower platen without stretching them out. Simply load the shirt onto the platen and feed the bottom of the garment through the clearance underneath the lower platen.
- **Slider-out Lower Platen:** With the slide-out lower platen, users can place or dress garments freely without worrying about burning their hands on the upper platen during heating.
- **Interchangeable Control Box:** With its high quality aviation connectors, the control box can be taken off and on easily. This helps with the machine maintenance.
- **Heat Platen:** Superior even heating



Scan for Info



Scan for Video

### SPECIFICATIONS

Item No.: J.01.01.0052-110V / J.01.01.0051-220V

Heater Size	15"x15"(38.1x38.1cm) 16"x20"(40.6x50.8cm)	Machine Weight	99.2 lbs(45kg) 101.4 lbs(46kg)
Temperature Range	Max.221°C/430°F	Packaging Weight	102.5 lbs(46.5kg) 119 lbs(54kg)
Heating Up Time	180°C/20 minutes	Power Requirements	1800W
Machine Dimensions	24.8"W x 16.1"D x 33.9"H 63cm x 41cm x 86cm 29.5"W x 16.9"D x 39.3"H 75cm x 43cm x 100cm		
Packaging Dimensions	28.15"W x 19.7"D x 18.5"H 71.5cm x 50cm x47cm 32.5"W x 19.5"D x 19.9"H 82.5cm x 49.5cm x50.5cm		

Auto-open/Manual      Optional



# PRISMA SWING

## HEAT PRESS



**The Prisma Swing Heat Press** was designed with a swing away design and a lighter weight, but with higher pressure to be used with all types of transfers, including dye sublimation materials, laser transfer paper, and DTF film.

Although the design of the press is common, the Prisma Swing Heat Press comes with a patented **Ramlock system**. This includes a wide space at the bottom for easier lay-in and take-out of your platens.

### FEATURES

- **Interchangeable Control Box:** With its high quality aviation connectors, the control box can be taken off and on easily. This helps with the machine maintenance.
- **Swing Away Design:** The swing-away design gives you completely unobstructed access to the lower platen while working. Load garments and place transfers without hassle.
- **Dressable Lower Platen:** The specially designed base allows users to dress garments over the lower platen without stretching them out. Simply load the shirt onto the platen, and feed the bottom of the garment through the clearance underneath the lower platen.
- **"RAMLOCK" Quick Change System:** With this patented system, users can change between multiple lower platen options and sizes quickly and easily.



Scan for Info



Scan for Video

### SPECIFICATIONS

Item No.: J.01.04.0015-110V / J.01.04.0014-220V

Heater Size	16"x20"(40.6x50.8cm)	Machine Weight	97 lbs(44kg)
Temperature Range	Max.221°C/430°F	Packaging Weight	101.4 lbs(46kg)
Heating Up Time	180°C/20 minutes	Power Requirements	1800W
Machine Dimensions	25.2"W x 17"D x 20.9"H 64cm x 43cm x 53cm		
Packaging Dimensions	28.9"W x 19.5"D x 22.4"H 73.5cm x 49.5cm x57cm		

Auto-open/Manual      Manual



# PRISMA PALETTE

## HEAT PRESS

# PRISMA HOBBY

## HEAT PRESS

### FEATURES



- **RAMSPIN System:** With the self-developed "RAMSPIN" quick-change system, users can switch between auto-open and manual open control options quickly and easily.
- **RAMLOCK Quick Change System:** With this patent system, customer can change multiple lower platens with different sizes easily.
- **Dressable Lower Platen:** The large space base allows users to dress garments over the lower platen without stretching them out. Simply load the shirt onto the platen and feed the bottom of the garment through the clearance underneath the lower platen.
- **Slider-out Lower Platen:** With slide-out lower platen, customers could put or dress garments freely without worrying about burning hands by upper heat platen during this process.
- **Interchangeable Control Box:** With its high quality aviation connectors, the control box can be taken off and on easily. This helps with the machine maintenance.
- **Heat Platen:** Superior even heating



Scan for Info



Scan for Video

Experience the convenience and reliability of the **Prisma Palette Heat Press!** With a 35\*42cm (13.78"x16.54") platen size, this is the perfect fit for any A3 and A4 sized printing solutions.

Its even heating, LED display, and interchangeable accessories make this press simple to use and reliable.

Choose from 3 color options: Classic (Black & Grey), Pink, and Mint.

### SPECIFICATIONS

Item No.: (Grey)J.01.06.0046-110V / J.01.06.0049-220V  
(Pink)J.01.06.0048-110V / J.01.06.0051-220V  
(Mint)J.01.06.0047-110V / J.01.06.0050-220V

Heater Size	13.8"x16.5"(35x42cm)	Machine Weight	71.9 lbs(32.6kg)
Temperature Range	Max.221°C/430°F	Packaging Weight	81.6 lbs(37kg)
Heating Up Time	180°C/20 minutes	Power Requirements	1500W
Machine Dimensions	23.15"W x 14.3"D x 18.6"H 58.8cm x 36.3cm x 47.3cm		
Packaging Dimensions	26.7"W x 18.1"D x 21.7"H 68cm x 46cm x55cm		
Auto-open/Manual	Optional		



### FEATURES



- **LED Digital Display**
- **Interchangeable Control box**
- **Heat Platen:** Superior even heating
- **Compact Design**
- **Over The Center Pressure Distribution**
- **Gas-springs Lift**
- **Dressable Lower Platen**



Scan for Info



Scan for Video

The **Prisma Hobby Heat Press** is an A4 sized press suitable for dye-sub starters, vinyl crafters, and all types of transfer printing. It is the perfect press for hobby or starter users, and those with limited working space.

The 15 kg total weight (including packaging) makes this press the perfect size to take your printing shop anywhere!

Plus, its elegant, intuitive design and interchangeable control box take this compact heat press to the next level!

Choose from 3 color options: Classic (Black & Grey), Pink, and Mint.

### SPECIFICATIONS

Item No.: (Grey)J.01.06.0053-110V / J.01.06.0052-220V  
(Pink)J.01.06.0055-110V / J.01.06.0054-220V  
(Mint)J.01.06.0057-110V / J.01.06.0056-220V

Heater Size	8.3"x11.8" (21.6x30cm)	Machine Weight	30 lbs(13.6kg)
Temperature Range	Max.221°C/430°F	Packaging Weight	34.1 lbs(15.5kg)
Heating Up Time	180°C/15 minutes	Power Requirements	700W
Machine Dimensions	17"W x 12.2"D x 14.6"H 43cm x 31cm x 37.1cm		
Packaging Dimensions	19.7"W x 14.6"D x 16.5"H 50cm x 37cm x42cm		
Auto-open/Manual	Manual		





# PRISMA DUET

## HEAT PRESS



### FEATURES

- **RAMLOCK Quick Change System:** With this patented system, users can change between multiple lower platen options and sizes quickly and easily.
- **Digital Control Panel**
- **Easy to Operate and install**
- **Friendly for beginners**
- **Compact in size and lightweight**
- **2-in-1 Logo and Cap Press**



Scan for Info



Scan for Video

The **Prisma Duet Heat Press** is specially developed for logo printing. No matter what substrate you're pressing on, whether it's a curved or straight surface, the Prisma Duet will get the job done easily and reliably.

### SPECIFICATIONS

Item No.: J.01.03.0071-110V/ J.01.03.0072-220V

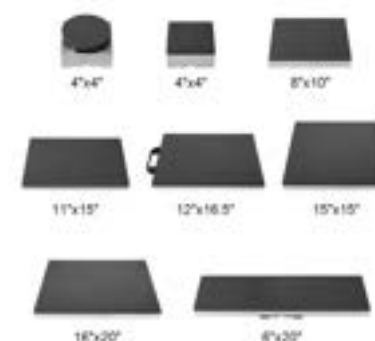
<b>Heater Size</b>	Flat: 8"x10" (20.3x25.4cm) Cap: 2.75"x6.5" / 3.5"x6.5" / 3"x5.75" / 4"x6.5" / 4"x8"	<b>Machine Weight</b>	64.4 lbs (29.2kg)
<b>Temperature Range</b>	Max. 221°C / 430°F	<b>Packaging Weight</b>	68.8 lbs (31.2kg)
<b>Heating Up Time</b>	180°C / 15 minutes	<b>Auto-open/Manual</b>	Manual
<b>Machine Dimensions</b>	22.3"W x 9.7"D x 21.7"H 56.7cm x 24.6cm x 55cm	<b>Power Requirements</b>	Flat: 700W Cap: 500W
<b>Packaging Dimensions</b>	21.6"W x 18.2"D x 20.2"H 54.8cm x 46.2cm x 51.2cm		



# ACCESSORIES

## HEAT PRESS

Item No.



Interchangeable Heat Press Platens

4" x 4" (square): 1801777  
4" x 4" (Round): 1600370  
8" x 10": 1600374  
11" x 15": 600371  
12" x 16.5": J.02.07.0066  
15" x 15": J.02.07.0012  
16" x 20": J.02.07.0013  
6" x 20": 1600372



Teflon Heat Press Pillow

A5: J.03.08.0017  
A4: J.03.08.0016  
16" x 16": J.03.08.0018  
16" x 20": J.03.08.0029



Teflon Sheet for Heat Press Transfer

9" x 12": 1800910  
11" x 15": 1800665  
15" x 15": 1800651  
16" x 20": 1800789



Teflon/Fabric Heat Press Cover—Custom Options Available

4" x 4": J.03.09.0021  
6" x 10": J.03.09.0023  
6" x 20": J.03.09.0022  
8" x 10": J.03.09.0018  
9" x 12": J.03.09.0019  
**11" x 15": J.03.09.0007 (Prisma Palette)**  
**11" x 15": J.03.09.0012 (Prisma Auto)**  
**15" x 15": J.03.09.0017 (Prisma Auto)**  
16.5" x 16.5": J.03.09.0020  
**16" x 20": J.03.09.0024 (Prisma Swing)**  
**16" x 20": J.03.09.0009 (Prisma Auto)**

# ARC 127

## ADVANCED ROLLER CUTTER



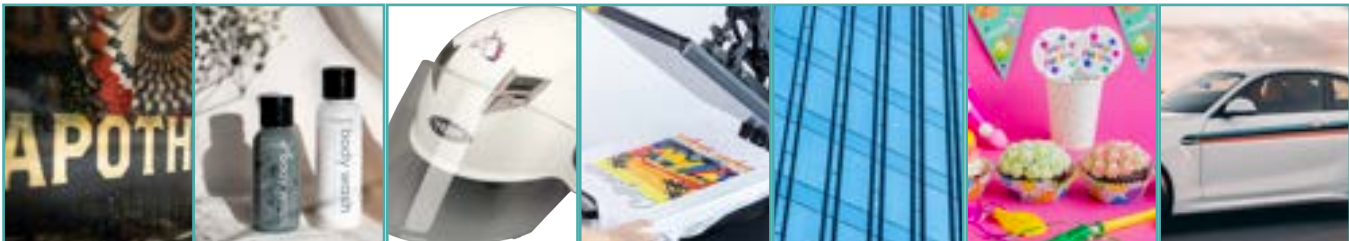
Air Compressor Included

**Arc 127** (Advanced Roller Cutter 127), DTF Station's first automatic roller cutting machine with a maximum cutting width of 23.6 inches (60 cm). It supports both sheet and roll cutting modes, with options for single-blade and dual-blade cutting. Arc 127 is ideal for a wide range of materials, including DTF and UV DTF prints, it is a powerful tool for boosting productivity in DTF and UV DTF image production.

- **Digirip integration requires Cutter Addon Module**

### Tools

- **High-Precision Passive Rotary Blade:** Made from high quality tungsten steel, it supports full and half cuts, suitable for flexible materials like vinyl films and adhesive labels.
- **Large Diameter Snap Ring Blade (Optional):** Ideal for cutting paper materials with a thickness of 1mm, providing smooth cutting edges.



Vinyl Signage | POP-Packaging | Stencils | DTF / Heat Transfer | Window Tinting Film | Party Decorations | Vinyl Decals

### FEATURES

- **Automated Cutting:** cut your DTF or UV DTF prints in an easier, less labor-intensive & less labor-expensive workflow
- **Seamless Integration:** integrate seamlessly with DigiRIP RIP Software and DTF Station's line of printers
- **Simple, user-friendly interface:** easy to use with intuitive control panel
- **Versatile:** cuts various materials (see specifications below for details)



Scan for Info



Scan for Video

# ARC 127

## ADVANCED ROLLER CUTTER

### SPECIFICATIONS

Item No.: D.02.05.0004-110V/ D.02.05.0005-220V

Max. Media Width	23.6" (600mm)	Mechanical Resolution	0.05mm
Max. Cutting Size	23.6"x23.6" (600mmx600mm)	Machine Dimensions	57.4"W x 51.2"D x 40"H 146cm x 130cm x 100cm
Cutting Methods	Full Cut, Half Cut, Crease Cut	Packaging Dimensions	67"W x 50"D x 46.8"H 170cm x 127cm x 118.9cm
Max. Cutting Force	9.8N	Machine Weight	529 lbs(240kg)
Cutting Speed	39.4"/s (1000mm/s)	Packaging Weight	551 lbs(250kg)
Cutting Thickness	1mm (with optional cutting tools)	Suitable Users	Industrial-level users /Printing factories
Power Requirements	1.1KW		

### AIR COMPRESSOR

Air Consumption	100 L/min	Max Pressure	8 Bar
Tank Capacity	8 Litre	Electrical Parameters	220V/2.5KW/15A 110V/1KW/4.5A
Rated Speed	1680 RPM		

### STRUCTURE

**Aluminum Vacuum Platform:**  
Vortex design with strong suction, enhancing material flatness.

**Conveyor System:**  
Equipped with pneumatic clamps and roll material support, improving the adhesion between the material and the conveyor belt.

**Cutting Precision:**  
Camera accurately reads marks, suitable for precise contour cutting.

**Feeding Design:**  
Designed for processing long roll materials, saving installation time and enhancing cutting stability.

**Multi-Functional Operation:**  
Supports blind cutting, edge detection, and single-sheet processing, meeting diverse needs.

**Independent electrical system and pneumatic system:**  
Easier maintenance and troubleshooting